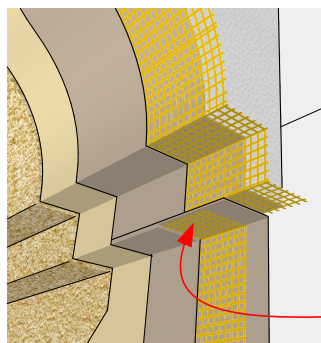
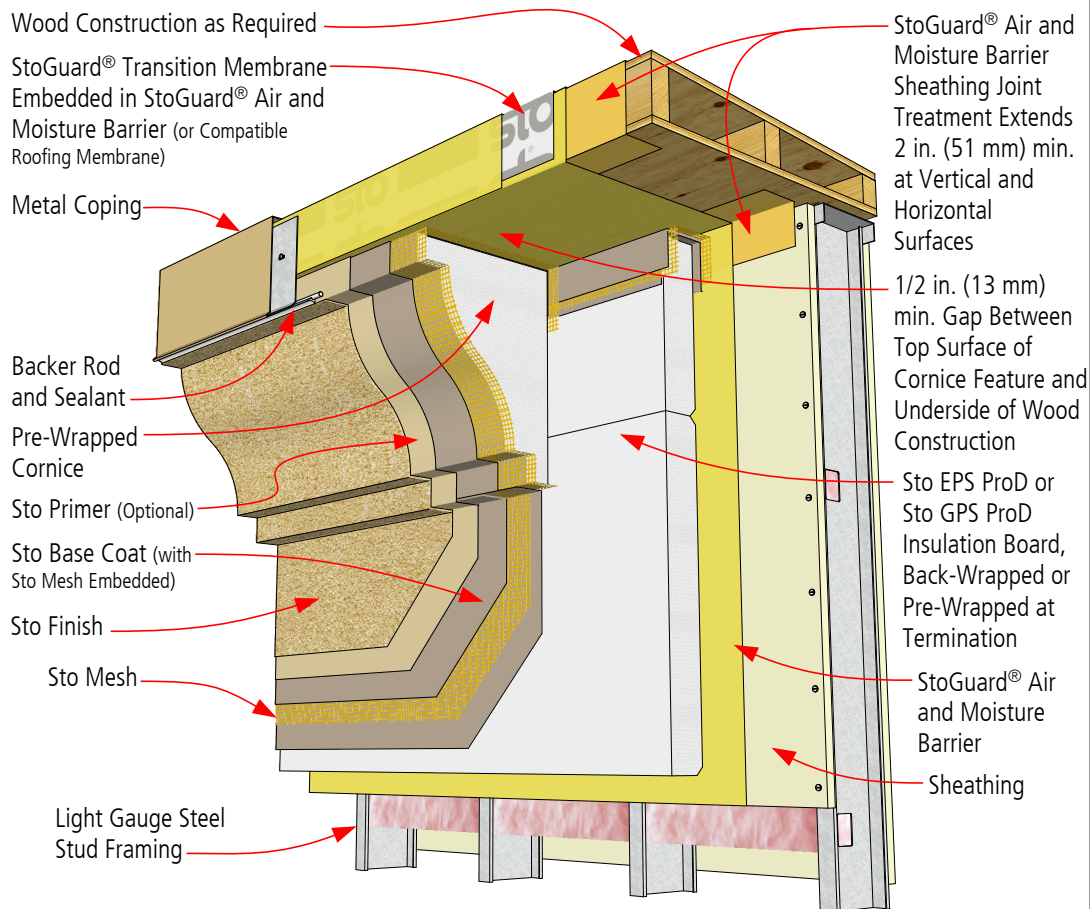


StoTherm® ci ProD Parapet with Cornice Feature

Detail No.: 54s.61
Date: April 2016

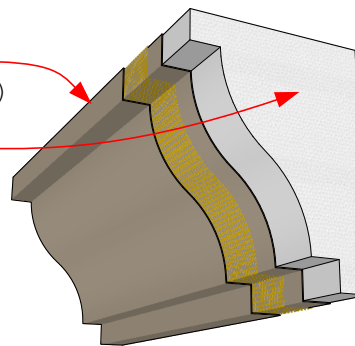


View of Mesh Overlap

Cornice Feature Pre-Wrapped with Sto Base Coat (with Sto Mesh Embedded)

Sto EPS ProD or Sto GPS ProD Insulation Cornice Feature

Sto Mesh Embedded in Base Coat Laps Sto Mesh on Cornice 2 1/2 in. (64 mm) min.



View of Pre-Wrapped Cornice

Property of Sto Corp. All Rights Reserved

Notes:

1. Cornice feature limited to 12" (30.5 cm) maximum thickness for noncombustible type construction. Special analysis with regard to fire propagation may enable thicker sections. Thicker sections permitted within practical limits for combustible construction.

2. Cornice feature attached with Sto TurboStick Adhesive; also used as filler and rasped smooth at any gaps between feature band and base layer of insulation board.

3. Cornice feature may also be attached directly to StoGuard where applicable.

4. Supplemental mechanical attachment of feature band maybe necessary in some cases. Verify installation method for adequate attachment before commencing work.

- Refer to StoTherm ci ProD System Bulletins and Specifications, Sto Product Bulletins, Tech Hotlines, and Sto Installation and Maintenance Guides for complete information.

- Refer to applicable CCMC Evaluation Reports for building code compliance information.

IMPORTANT: Components not identified as Sto are furnished by other manufacturers and are not necessarily installed by trades who install Sto products. Refer to project specific contract documents.

ATTENTION

Sto products are intended for use by qualified professional contractors, not consumers, as a component of a larger construction assembly as specified by a qualified design professional, general contractor or builder. They should be installed in accordance with those specifications and Sto's instructions. Sto Corp. disclaims all, and assumes no, liability for on-site inspections, for its products applied improperly, or by unqualified persons or entities, or as part of an improperly designed or constructed building, for the nonperformance of adjacent building components or assemblies, or for other construction activities beyond Sto's control. Improper use of Sto products or use as part of an improperly designed or constructed larger assembly or building may result in serious damage to Sto products, and to the structure of the building or its components.

STO CORP. DISCLAIMS ALL WARRANTIES EXPRESSED OR IMPLIED EXCEPT FOR EXPLICIT LIMITED WRITTEN WARRANTIES ISSUED TO AND ACCEPTED BY BUILDING OWNERS IN ACCORDANCE WITH STO'S WARRANTY PROGRAMS WHICH ARE SUBJECT TO CHANGE FROM TIME TO TIME. For the fullest, most current information on proper application, clean-up, mixing and other specifications and warranties, cautions and disclaimers, please refer to the Sto Corp. website, www.stocorp.com.

www.stocorp.com

